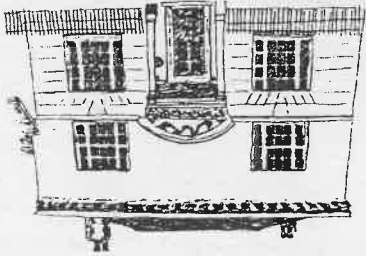
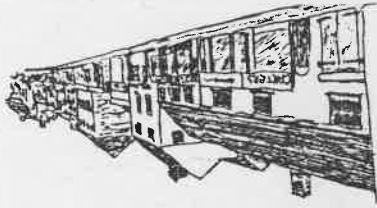


12. Queen Anne House - built between 1680 and 1720 was formally known as Waltham House.



It has a hipped roof and dormer windows, a fine wooden eaves modillion cornice and the front door is covered over by a curved porch. Above the door is a frieze and an entablature enriched with foliage, flowers of fruit and swags of fruit. Either side are Doric columns. Unfortunately the building adjoining this, which had lovely pineapple heads on the gates, was demolished.

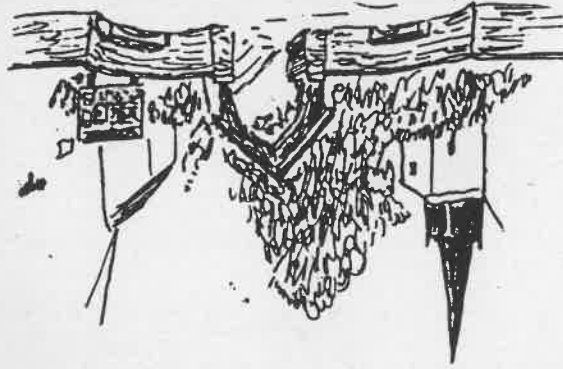
13. This was originally The White Swan



Inn - an inn and lodging house, now it is an electrical goods shop.

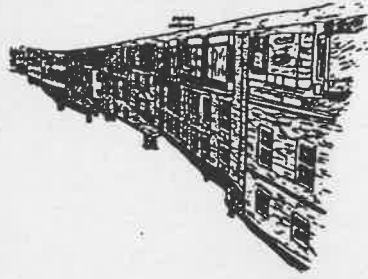
14. The National Girls School and School Master's House was built in 1836 to educate the poor of the town. In 1850 it

10. This is the entrance to the churchcroft, a recreational area for the town and leads to the south side of the church.



The wall encloses the original large Coleshill Vicarage.

11. This side of the High Street still has many fine houses with shops on the ground floor. They vary in style but are mostly 18th century. Some still have long narrow gardens which were the original burgage plots and which had an entrance into Back



Lane - now known as Parkfield Road. This was the shopping part of the town owned by prominent towns people.

